





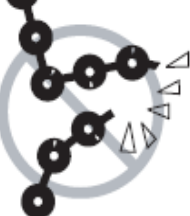





Operation and Service Manual

STS15	STS38	ST20(H)WW	STL25(H)
ST25(H)	ST30(H)WW	STL38(H)	ST38(H)
ST38(H)WN	STL50(H)	ST50(H)	ST50(H)WN
STL65(H)	ST65(H)	ST80(H)	ST80(H)WW
ST100(H)	ST100(H)WN		

Read this manual carefully and understand completely before operating stackers. Keep filing this manual for future reference. If this copy is lost, please contact your local supplier for a replacement.

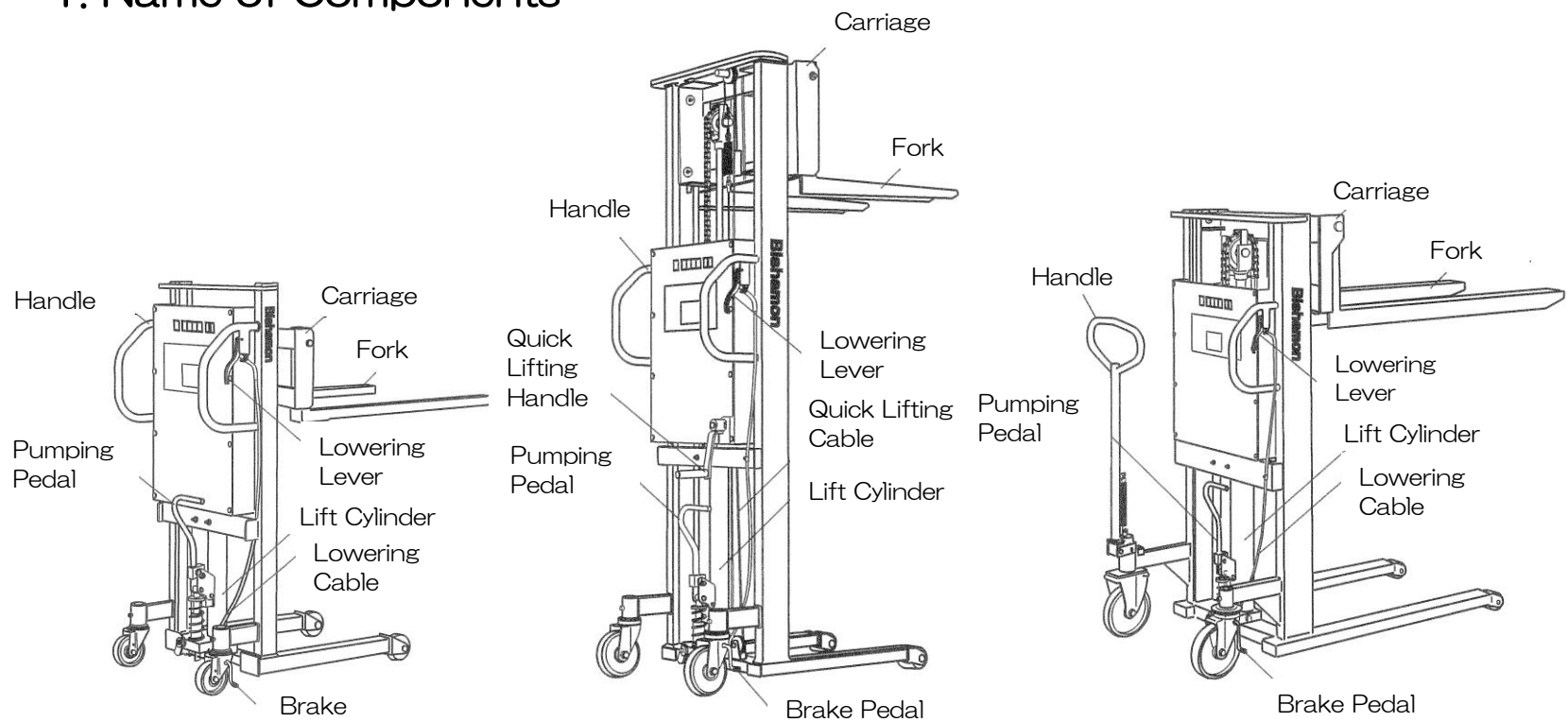
⚠ Warning !

Ⓢ Hazard or unsafe practice which, if not avoided, may result in DEATH or SEVERE PERSONAL INJURY and PROPERTY DAMAGE.			
			
DO NOT use lifter on slope, unlevel or soft surface. Lifter may become unstable and /or uncontrollable. SEVERE PERSONAL INJURY and PROPERTY DAMAGE could result.	Always travel with forks in lowered position. SEVERE PERSONAL INJURY and PROPERTY DAMAGE could result.	DO NOT load one fork more than other and DO NOT load tips on forks. SEVERE PERSONAL INJURY or DEATH could result.	NEVER sit, stand or ride on forks. SEVERE PERSONAL INJURY or DEATH could result.
			
NEVER go under forks. SEVERE PERSONAL INJURY or DEATH could result.	DO NOT overload lifter. ALWAYS stay within designated capacity and load center rating.	Replace chain every four years or if inspection reveals excessive wear on links, pins, side plates and deformed, bent, rusted or broken links.	DO NOT use in areas of multi level floor surface that could create loss of control and result in SEVERE PERSONAL INJURY.
			
DO NOT put hand near chain sprocket or other moving parts. SEVERE PERSONAL INJURY could result.	KEEP FEET CLEAR of rolling wheels that could result in SEVERE PERSONAL INJURY.		

⚠ Caution !

Ⓢ Hazard or unsafe practice which, if not avoided, may result in MINOR or MODERATE PERSONAL INJURY and PROPERTY DAMAGE.
<ol style="list-style-type: none"> 1. READ THIS OPERATION MANUAL COMPLETELY BEFORE USING AND THOROUGHLY UNDERSTAND AND FOLLOW ALL SAFETY INSTRUCTIONS. Wrongful use may result in accident. 2. This stacker lifter is designed to use on smooth floor with balanced, stable, firmly stacked load that is within capacity and loading diagram. DO NOT use for any other purpose than its intended use. 3. Stacker lifter shall be operated by TRAINED personnel only. OPERATOR shall read "Operation Manual" completely and thoroughly understand the controls and operation of this equipment BEFORE operating the lifter. 4. Do Not lower the fork with load with fast speed. Or it may result in impact load and damage the stacker. 5. ALWAYS observe lifter and ALWAYS stay at the controls while the lifter is in motion. RELEASE controls and STOP lifter immediately if load on the lifter appears to become unstable. NEVER leave the loaded lifter unattended unless the forks are fully lowered position. 6. Set the parking brake and park the stacker when moving the load onto the fork. Or the unit may start to move all of a sudden during moving of the load and may result in falling of the load. 7. DO NOT use lifter with unstable, unbalanced or loosely stacked load. Unbalanced loads may become unstable and fall. SEVERE PERSONAL INJURY and PROPERTY DAMAGE could result. 8. Do Not handle unsecured or unstable load that could fall backwards. 9. Perform the inspection following to the instructions of Operation Manual. 10. Do Not alter or modify the stackers in any way. 11. Do Not use forks or lift as a hoist or to pull up the load. SEVERE PERSONAL INJURY and PROPERTY DAMAGE could result. 12. Keep the forks be widened equally in operation. Or it may result in damage to the unit and falling of the load. 13. ALWAYS keep feet, hands and fingers away from casters, load wheels and all moving components. SEVERE INJURY could result. 14. ALWAYS perform maintenance and inspection with lifter unloaded. 15. Do Not use Quick Lifting device when load is on the fork. 16. Do Not use Quick Lifting device with valve open. If valve is kept open, fork will fall down with faster speed when handle is released. And it may result in rotating of the handle and it is dangerous. 17. When Quick Lifting handle is not used, make certain handle is off the roll pin. 18. Do Not move too fast. Or it may result in the inability of the control of the unit. 19. The lifter is NOT waterproof and is intended to be used in a dry environment and at a moderate temperature range.

1. Name of Components



2. Pre-Operation Checks

⚠ Caution !

DO NOT USE THIS STACKER AT ALL IF REPAIRS ARE REQUIRED OR IF YOU SUSPECT A MALFUNCTION

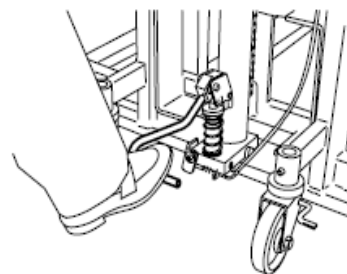
Perform the Pre-Operation checks before operating everyday.

1. Any damage, distortion or crack in post
2. Any damage, distortion or crack in carriage and forks
3. Smooth movement of front and rear wheels
4. Any oil leak from hydraulic line or cylinder
5. Any damage, kink or crack in chain
6. Check if brake works properly
7. Any natural lowering
8. Fastening of bolts and nuts

3. Operation

1. Lifting

- ① Put the fork of the unit into the center of the load
- ② Fork will rise by pumping the pedal. Lift up the fork up to required height.

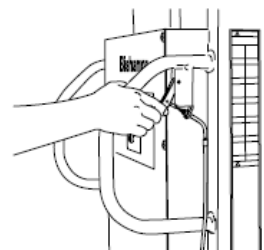


⚠ Caution !

- * DO NOT lift up the load or anything above the rated capacity.
- * DO NOT lift the load only at the tip of the forks. Lift up the load within loading diagram capacity

2. Lowering

- ① Fork will lower by pulling the lowering lever.
- ② Release the lever when the fork is lowered down to required height.



⚠ Caution !

- * DO NOT lower the fork too fast. Or it may result in the falling of the load.
- * DO NOT pull the lever when moving.

3. Moving (Maneuvering)

- ① Hold handle and move unit carefully.

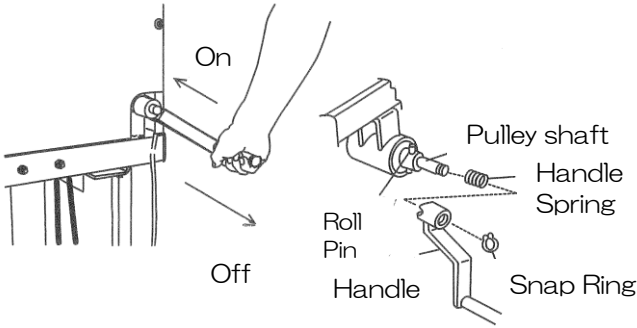
⚠ Caution !

- * DO NOT move or turn around with load kept at a high position.
- * DO NOT pull the Lowering Lever when moving

4. Quick Lifting Device

(applicable only with Quick Lifting Device installed model

- ① Check if the Lowering lever is in closed position.
- ② Press the cut off part of the Qucik Lifting Handle in and make sure it is engaged securely to the roll pin. And then rotate the handle clockwise
- ③ When Quick Lifting Device is not used, make certain handle is off the roll pin (disengaged)

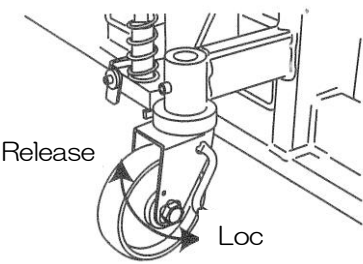


⚠ Caution !

- * DO NOT use Quick Lifting Device when load is on the fork.
- * When Quick Lifting Device is not used, make certain the handle is off the roll pin (disengaged). If kept engaged, the handle will rotate and can be dangerous when lowering lift.

5. Brake

- ① To Lock - Step down the lever of the caster to lock the brake on the wheel
- ② To Release - Pull up the brake lever by toe.



⚠ Caution !

- * Make certain to set the brake whenever the lift is not moving.

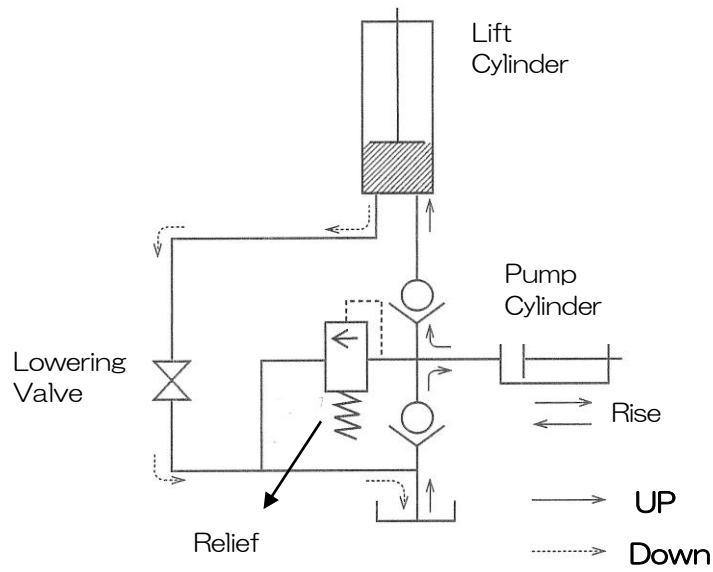
6. Adjusting the Fork Width

- ① Lift up the top end of fork and slide the fork.

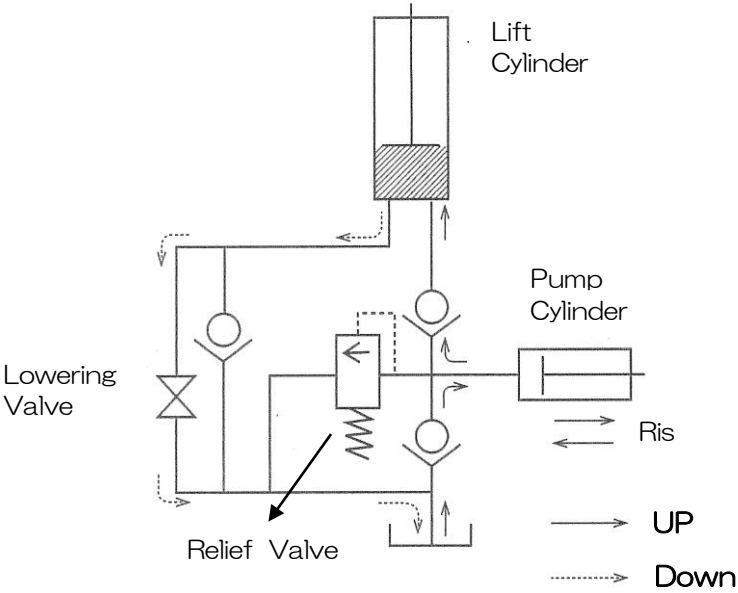
4. Circuit Diagram

【 Hydraulic Circuit 】

Standard Model



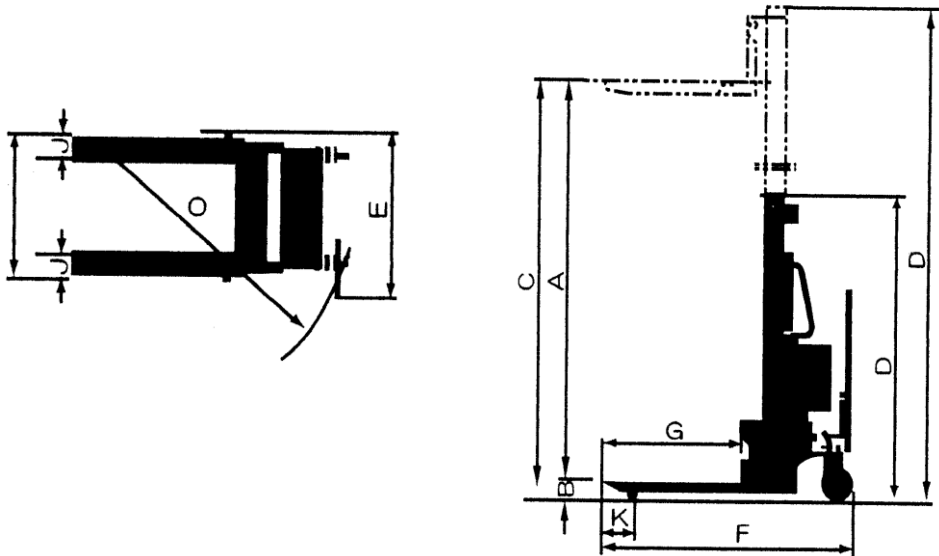
With Quick Lifting Device



5. Specifications (Manually Operated Model)

	Model	STS15	STS38	ST20WW	STL25	ST25	ST30WW	STL38	ST38	ST38WN
	Capacity (Kgs)	150	380	200	250		300	380		
A	Vertical Travel (mm)	750		1500	1200	1500		1200	1500	
B	Fork Min. Height (mm)	90			88		90			
C	Fork Max. Height (mm)	840		1590	1288	1588	1590	1290	1590	
D	Overall Height (mm)	1225	1251	1966	1593	1893	1969	1666	1966	
E	Overall Width (mm)	645	683	1375	645		1375	641		875
F	Oerall Length (mm)	1192	1306	1499	992		1506	1099		
H	Max. Width of forks (mm)	628	600	558	628		600	558		
I	Min. Width of forks (mm)	125	232		125		232			
G	Fork Length (mm)	750	600	1000	550		1000	600		
J	Fork Width (mm)	60	110		60		110			
K	From Front Wheel shaft to Fork End (mm)	317	269	354	117		269	154		
*	Location of Fork at lowered position	B	A	B				A		B
	Approx. Strokes to Max Height	27 times	37 times	53 times	43 times	53 times	71 times	43 times	53 times	
	Lifting per stroke (mm)	28	20	28			21	28		
L	Load Center (mm)	400		500	300		500	300		
	Outside distance between Arms (mm)	502	586	1375	502		1375	544		871
	Inside distance between Arms (mm)	360	394	1175	360		1175	352		679
	Front Wheel (Polyurethane) OD x W (mm)	80 x 32	70 x 73		80 x 32		70 x 73			
	Rear Wheel (Polyurethane) OD x W (mm)	100 x 32	150 x 42		100 x 32		150 x 42			
O	Minimum Turning Radius (mm)	822	1026	1327	822		1413	923		1014
	Machine Weight (Kgs.)	57	135	159	62	67	193	117	122	132
	Oil Volume (Litter)	0.35	0.47	0.69	0.55	0.69		0.55	0.69	
	Model No. with Quick Lifting Device	-	-	ST20HWW	STL25H	ST25H	ST30HWW	STL38H	ST38H	ST38HWN

	Model	STL50	ST50	ST50WN	STL65	ST65	ST80	ST80WW	ST100	ST100WN
	Capacity (Kgs)	500			650		800		1000	
A	Vertical Travel (mm)	1200	1500		1200		1500			
B	Fork Min. Height (mm)	90								
C	Fork Max. Height (mm)	1290	1590		1290	1590				
D	Overall Height (mm)	1669	1969		1667	1967				
E	Overall Width (mm)	683		875	883			1400	883	934
F	Oerall Length (mm)	1106			1851		1651		1451	
H	Max. Width of forks (mm)	600			726					688
I	Min. Width of forks (mm)	232			275					
G	Fork Length (mm)	600			1200		1000		800	
J	Fork Width (mm)	110			125					
K	From Front Wheel shaft to Fork End (mm)	69			395			195		
*	Location of Fork at lowered position	A		B	A			B	A	B
	Approx. Strokes to Max Height	57	71		102	127				
	Lifting per stroke (mm)	21			12					
L	Load Center (mm)	300			600		500		400	
	Outside distance between Arms (mm)	586		871	700			1400	700	900
	Inside distance between Arms (mm)	394		679	500			1200	500	700
	Front Wheel (Polyurethane) OD x W (mm)	70 x 73								
	Rear Wheel (Polyurethane) OD x W (mm)	150 x 42			200 x 42					
O	Minimum Turning Radius (mm)	1026		1103	1484		1304	1657	1304	1353
	Machine Weight (Kgs.)	151	156	166	247	252	251	276	250	260
	Oil Volume (Litter)	0.75	0.94		0.98	1.23				
	Model No. with Quick Lifting Device	STL50H	ST50H	ST50HWN	STL65H	ST65H	ST80H	ST80HWW	ST100H	ST100HWN



* Location of Fork at lowered position A : On top of Arm, B : At side of Arm
Specifications are subject to change without notice

6. Routine Maintenance

1. Check for rust, crack and kink in chain (Monthly)
2. Grease to rail of post for roller, lubricate grease fitting of chain bracket and chain. (every 6 months)
3. Lubricate handle bracket pin and bearings (Every 6 months)
4. Replace hydraulic oil. (Every 12 months)

Required Volume of Hydraulic Oil

STS15	0.35L	STS38, ST38WN	0.69L
ST20WW	0.69L	STL50	0.75L
STL25, STL38	0.55L	ST50, ST50WN	0.94L
ST25, ST30WW	0.69L	STL65	0.98L
STS38	0.47L	ST65, ST80, ST10	1.23L
			ST80WN, ST100WN		

Recommended Hydraulic Oil

Manufacturer	Hydraulic Oil	Manufacturer	Hydraulic Oil
Esso	Unipower SQ32, XL32,	Mobil	Mobil DTE24
Shell	Tellus Oil 32, K32, W-R Oil 32	Caltex	Rando Oil A

7. Trouble Shooting

Trouble		Cause	Shooting
Forks do not rise without load		1. Lack of oil 2. Air in the pump cylinder	Add the hydraulic oil Remove air
Natural Lowering		1. Seating failure of the Lowering Valve 2. Lowering Valve is not closed 3. Seating failure of steel ball 4. Wear in the O Ring on the Piston or Piston Rod	Replace Lowering Valve Adjust the cable on the Lowering Lever Clean or replace steel ball Replace the O Ring
Forks do not lower by pulling Lowering Lever		1. Lowering Valve is not open	Adjust the cable on the Lowering Lever
Oil Leak	At Pump Piston	1. Defective Dust Seal 2. Wear in the O Ring	Replace Dust Seal Replace the O Ring
	At Top Nut	1. Defective Dust Seal 2. Wear in the O Ring	Replace Dust Seal Replace the O Ring
	At Valve Seat	1. Wear in the O Ring	Replace the O Ring

8. Warranty

We warrant the products manufactured by Sugiyasu Corporation to be free from defects in workmanship and material for 1 year after delivery of the products. Our obligation under this warranty is limited to repair or replacement, at our option, of any parts or material which, within this warranty period, are found to our satisfaction to be defective.

Note : The below are not covered by the warranty.

- 1 The damage or trouble caused by false operation, negligence in the maintenance and storage required.
- 2 The damage or trouble caused by any modification that affects the originally designed functions.
- 3 Any consumable parts that need to be replaced.
- 4 The damage or trouble caused by natural disaster such as fire, earthquake, flood etc.
- 5 The damage or trouble caused by not using genuine manufacturer parts.
- 6 The required information such as serial No. etc.would not be provided.
- 7 The damage or trouble caused by improper installation.

※ Any consumable parts are not covered under this warranty.
(Consumable Parts not to be covered under warranty)

※ As this stacker is not weatherproof, trouble caused by corrosion, rust, short circuit from water are not covered under this warranty.

How To Claim

Contact your supplier.

9. After Service

- | | | |
|--------------------------------|---|--|
| • Something is wrong | ⇒ | Check in accordance with this manual |
| • Something is still wrong | ⇒ | Contact your supplier for repair |
| • Repair under warranty perido | ⇒ | Will be repaired in accordance with warranty rules |
| • Repair after warranty perido | ⇒ | Contact your supplier |
| • Availability of Spare Parts | ⇒ | The spare parts is available for 8 years after discontinuing manufacturing |
| • | | |

Contact your supplier for any information regarding to the after service. When contacting your supplier, provide Model No., Serial No., purchase date etc. and conditions of trouble.

For your recoeds and future contact, fiill out below.

Model No.	
Serial No.	
Purchase Date	
Supplier Name Address Tel. No.	
Trouble Date and conditions	Date : Date : Date : Date :



EUROPEAN INSPECTION AND CERTIFICATION COMPANY S.A.

CERTIFICATE OF CONFORMITY

FULLNESS EXAMINATION OF TECHNICAL FILE

Certificate No. : MA.0627
Issue Date : 24/08/2020
Expiry Date : 23/08/2025
Applicant : SUGIYASU CORPORATION.
(Name & Address) : 3-21, 4-CHOME, HONGO-CHO, TAKAHAMA CITY, JAPAN 444-1394
Manufacturer : SUGIYASU CORPORATION.
(Name & Address) : 3-21, 4-CHOME, HONGO-CHO, TAKAHAMA CITY, JAPAN 444-1394
TCF No. : SC-2020003-A1
Product Description : HYDRAULIC STACKERS
Model(s) : STS15, STS38, ST20WW, STL25, ST25, ST30WW, STL38, ST38, ST38WN, STL50, ST50, ST50WN, STL65, ST65, ST80, ST80WW, ST100, ST100WN, ST20HWW, STL25H, ST25H, ST30HWW, STL38H, ST38H, ST38HWN, STL50H, ST50H, ST50HWN, STL65H, ST65H, ST80H, ST80HWW, ST100H, ST100HWN
Directive(s) : Machinery Directive 2006/42/EC
Standard(s) : EN ISO 12100:2010, EN ISO 3691-5:2014

This is to certify that, upon the relevant request of the applicant, EUROCERT as Third Party Authority has reviewed the Technical Construction File of the described product which found to fulfill the basic health and safety prerequisites of above mentioned Directive(s).

Note:

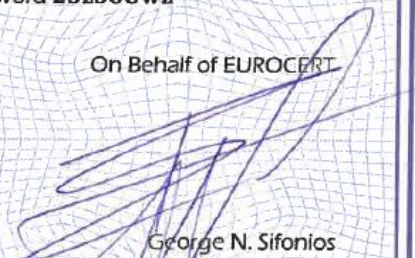
- The manufacturer should issue a Declaration of Conformity according to the basic requirements of the applicable and relevant directives.
- The CE marking can be affixed on the above mentioned product with the manufacturer's responsibility, if all relevant and applicable directives are complied with.
- All modifications to the Technical File should be first submitted to the Third Party Inspection Authority to ensure further validity of this attestation.
- This certificate is valid only for the product and configuration described and in conjunction with the technical data detailed above.

Please check the validity of the certificate from our website using the password **25z38Uwz**



Third Party Authority Stamp

On Behalf of EUROCERT


George N. Sifonios
Director of Development

89 CHLOIS STR. & LIKOVRISEOS, 144 52 METAMORFOSI, ATHENS, GREECE
Tel: ++30 210 62.52.495, 30 210 62.53.927 : Fax ++30 210 62.03.018
Internet site: www.eurocert.gr : e-mail: info@eurocert.gr



Manufactured by



Sugiyasu Corporation

3-21, 4 Chome, Hongo Cho, Takahama City, Aichi Pref., Japan 444-1394

Tel. 81-566-53-1126 Fax. 81-566-53-1844 E-mail : sugiyasu@bishamon.co.jp